

Lugged & Tapped Wafer Butterfly Valves

BS 5155

Sizes 50 - 300mm

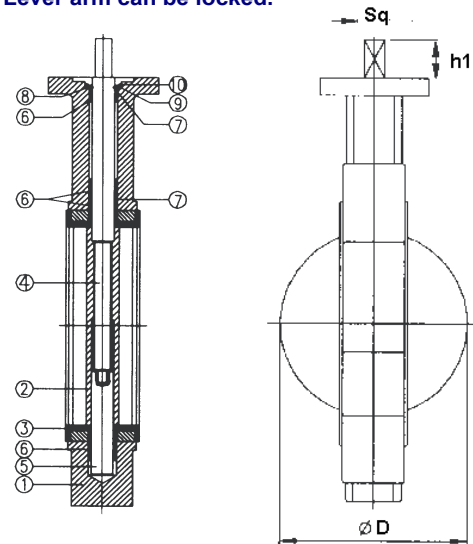
ISO Top Flange as standard



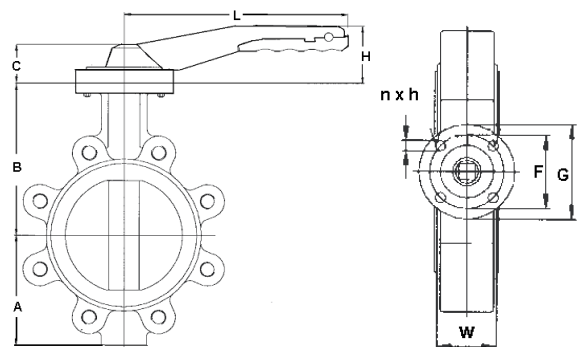
Maximum Operating Pressure - 16 Bar
Maximum Working Temperature - 120 Deg C

Gearboxes can be easily fitted if required
Lever arm can be locked.

No	Item	Material	Material
1	Body	Ductile Iron GGG50	Ductile Iron GGG40
2	Disc	Stainless Steel 316	Nickel Plated DI
3	Seat	EPDM	NBR
4	Upper Shaft	SS410	SS410
5	Lower Shaft	SS410	SS410
6	Bushing	PTFE	PTFE
7	O-Ring	EPDM	NBR
8	Half Ring	SS 304	SS 304
9	Washer	SS 304	SS 304
10	Half Ring	SS 304	SS 304
11	Coating	Blue FBE	Blue FBE



DIMENSIONS													
Dia.	A	B	C	D	F	G	L	H	W	Sq.	h1	n x h	Torque NM
50mm	80	142	32	52	70	90	205	54	43	11	19	4x10	19NM
65mm	89	155	32	63	70	90	205	54	46	11	19	4x10	21NM
80mm	95	161	32	78	70	90	205	54	46	11	19	4x10	28NM
100mm	114	180	32	101	70	90	205	54	52	11	19	4x10	43NM
125mm	127	193	32	122	70	90	254	65	56	14	19	4x10	60NM
150mm	139	205	32	155	70	90	254	65	56	14	19	4x10	91NM
200mm	175	250	40	201	102	125	359	71	60	17	25	4x12	194NM
250mm	203	282	40	250	102	125	359	71	68	22	40	4x12	295NM
300mm	242	326	40	301	102	125	359	71	78	22	40	4x12	412NM



Castings Services Limited
Head Office & Valve Division
Langley Road South, Salford
Manchester, England. M6 6TZ

Tel : 00 44 (0) 161 745 9095
Fax: 00 44 (0) 161 745 8996



E-Mail: sales@castings-services.co.uk

Web: www.castings-services.co.uk

Pipeline Sales Office
Unit 7, Oaktree Business Park
Cadley Hill Road, Swadlincote
Derbyshire. DE11 9DJ

Tel : 00 44 (0) 1283 554720
Fax: 00 44 (0) 1283 554721

Castings Services reserve the right to make any design modifications without giving prior notice. E & O E.

Document Ref: VZBF.W.01