



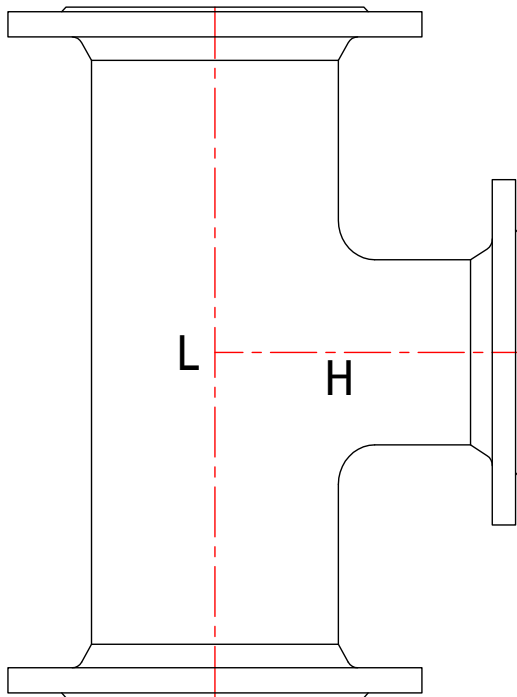
# FLANGED 'T'

F18.2

## CLASS K12

STANDARD

BS EN 545/598 ISO 2531



Diameter (mm)	Branch Diameter (mm)	DIN/ISO 2531 & Series A		Series B		Weight (Kg)	CSG Reference
		'L' (mm)	'H' (mm)	'L' (mm)	'H' (mm)		
80	80	330	165	330	165	16	F080T080
100	80	360	175	330	175	19	F100T080
100	100	360	180	360	180	20	F100T100
150	80	440	205	360	200	29	F150T080
150	100	440	210	380	205	30	F150T100
150	150	440	220	440	220	33	F150T150
200	80	520	235	380	225	42	F200T080
200	100	520	240	400	230	43	F200T100
200	150	520	250	460	245	46	F200T150
200	200	520	260	520	260	49	F200T200
250	80	700	265	405	265	65	F250T080
250	100	700	275	425	270	67	F250T100
250	150	700	300	485	280	70	F250T150
250	200	700	325	540	290	75	F250T200
250	250	700	350	600	300	81	F250T250
300	80	800	290	425	295	91	F300T080
300	100	800	300	450	300	93	F300T100
300	150	800	325	505	310	96	F300T150
300	200	800	350	565	320	101	F300T200
300	250	800	375	620	330	108	F300T250
300	300	800	400	680	340	117	F300T300

### OPTIONS

- EN598
- EN545

Please remember to order gaskets

Technical drawings for illustrative purposes only. Actual product may be subject to minor design changes without notice.



#### Head Office

Langley Road South,  
Salford,  
Manchester M6 6TZ

T: +44 (0) 161 745 9095

F: +44 (0) 161 745 8996