



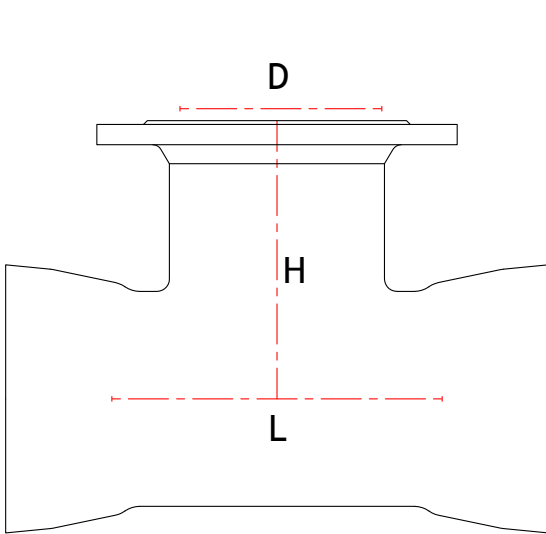
FLANGE ON SOCKET 'T'

S6.1

CLASS K12

STANDARD

BS EN 545/598 ISO 2531



Dimension (mm)	Dimension 'D' (mm)	Dimension 'L' (mm)	Dimension 'H' (mm)	Weight (Kg)	CSG Reference
350	80	205	330	71	T350TF080
350	100	205	330	72	T350TF100
350	150	325	350	86	T350TF150
350	200	325	350	88	T350TF200
350	300	440	370	118	T350TF300
350	350	495	380	120	T350TF350
400	80	210	360	80	T400TF080
400	100	210	360	82	T400TF100
400	150	325	380	90	T400TF150
400	200	325	380	98	T400TF200
400	300	440	400	128	T400TF300
400	400	495	420	156	T400TF400
450	80	215	395	100	T450TF080
450	100	215	395	102	T450TF100
450	150	330	410	120	T450TF150
450	200	330	410	125	T450TF200
450	300	445	430	150	T450TF300
450	400	560	450	181	T450TF400
450	450	620	460	200	T450TF450
500	80	215	420	110	T500TF080
500	100	215	420	116	T500TF100
500	150	330	440	130	T500TF150
500	200	330	440	138	T500TF200
500	300	450	460	165	T500TF300
500	400	565	500	205	T500TF400
500	500	680	500	250	T500TF500
600	80	220	480	150	T600TF080
600	100	220	480	153	T600TF100
600	150	340	500	170	T600TF150
600	200	340	500	189	T600TF200
600	300	455	520	235	T600TF300
600	400	570	540	265	T600TF400
600	450	820	560	320	T600TF450
600	500	820	570	353	T600TF500
600	600	800	580	370	T600TF600

OPTIONS

- EN598
- EN545

Please remember to order gaskets

Technical drawings for illustrative purposes only. Actual product may be subject to minor design changes without notice.