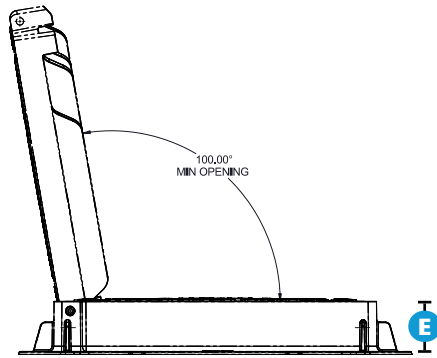
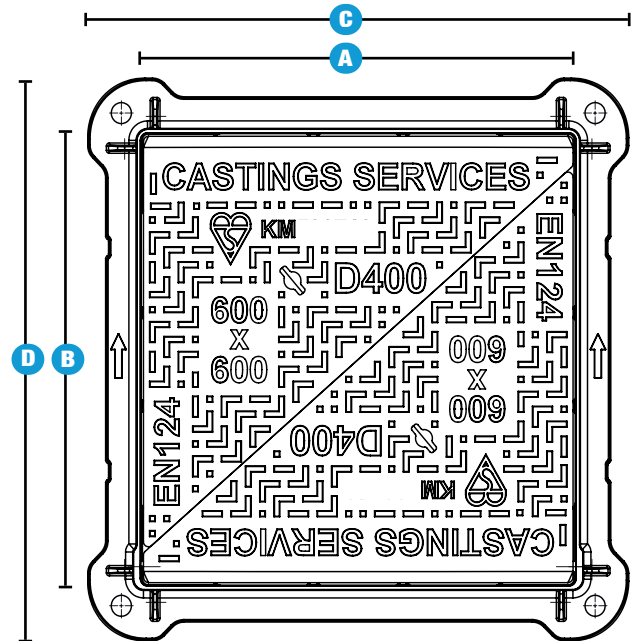
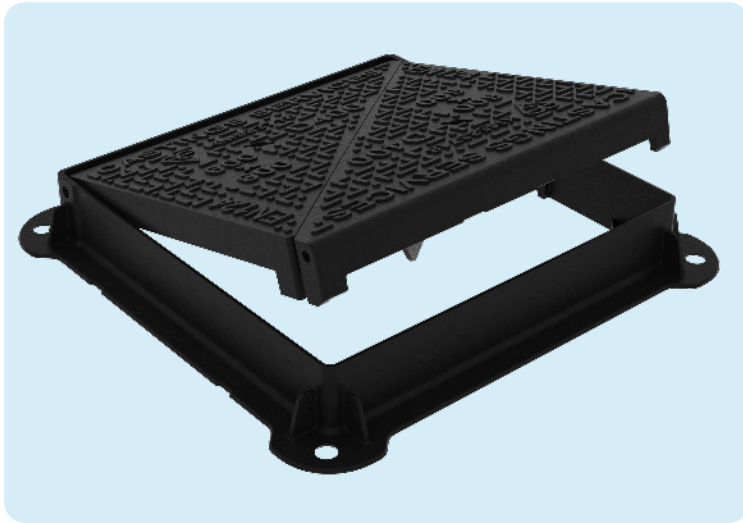


# D400 DUCTILE IRON HINGED COVER AND FRAME



Clear Opening (A x B)	Over Fame (C x D)	Depth (E)	Product Code
450 x 450	600 x 600	100	MDD4545DT10/T
600 x 450	750 x 600	100	MDD6045DT10/T
600 x 600	750 x 750	100	MDD6060DT10/T
600 x 600	750 x 750	150	MDD6060DT15/T
675 x 675	825 x 825	100	MDD6767DT10/T
675 x 675	825 x 825	150	MDD6767DT15/T
750 x 600	900 x 750	100	MDD7560DT10/T
750 x 750	900 x 900	100	MDD7575DT10/T
900 x 600	1050 x 750	100	MDD9060DT10/T
900 x 900	1050 x 1050	100	MDD9090DT10/T

## Key Features:

- Hinged for one man operation.
- Non-rock, double triangular lids.
- HA104/09 and BSEN124-2:2015 compliant.
- Suitable for high intensity traffic areas.
- Designed to last, not just pass the EN124 test.
- Quality assured UK engineering.



**BSI**  
Certified



**EN124-2**  
Compliant



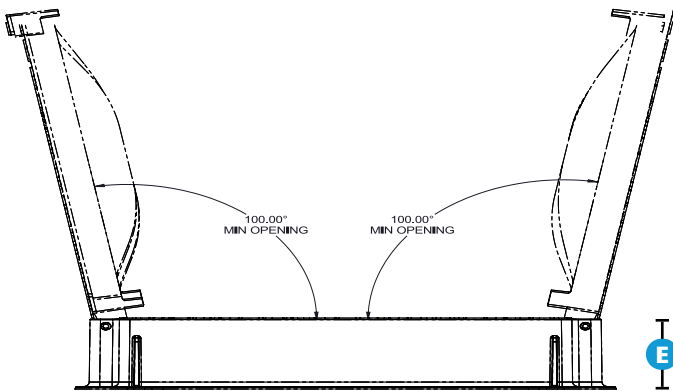
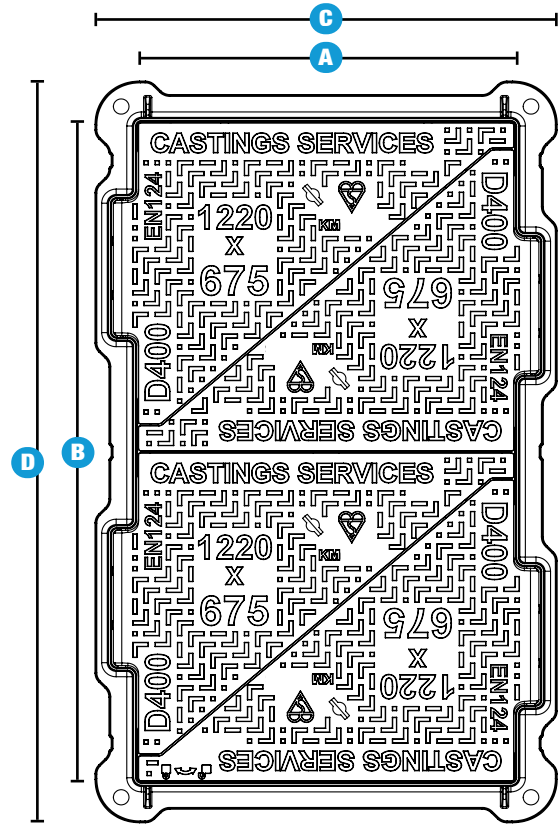
**HA104/09**  
Compliant

**D400**  
Group 4

Sales Office **0161 745 9095**  
 Telecom Products **0161 907 1242**  
 Pipelines **0161 907 1241**  
 Email [sales@castings-services.co.uk](mailto:sales@castings-services.co.uk)  
[www.castings-services.co.uk](http://www.castings-services.co.uk)



# D400 DUCTILE IRON HINGED COVER AND FRAME



Clear Opening (A x B)	Over Fame (C x D)	Depth (E)	Product Code
1220 x 675	1370 x 820	100	MDD12067DT10/T
1220 x 675	1370 x 820	150	MDD12067DT15/T
1200 x 750	1350 x 900	100	MDD12075DT10/T
1200 x 900	1350 x 1050	100	MDD12090DT10/T
1500 x 750	1650 x 900	100	MDD15075DT10/T
1500 x 900	1650 x 1050	100	MDD15090DT10/T
1830 x 675	1980 x 825	150	MDD183067DT15/T
1000 x 1000	1150 x 1150	100	MDD100100DT10/T
1200 x 1200	1350 x 1350	100	MDD120120DT10/T

## Key Features:

- Hinged for one man operation.
- Non-rock, double triangular lids.
- HA104/09 and BSEN124-2:2015 compliant.
- Suitable for high intensity traffic areas.
- Designed to last, not just pass the EN124 test.
- Quality assured UK engineering.



**BSI**  
Certified



**EN124-2**  
Compliant



**HA104/09**  
Compliant

**D400**  
Group 4

Sales Office **0161 745 9095**

Telecom Products **0161 907 1242**

Pipelines **0161 907 1241**

Email [sales@castings-services.co.uk](mailto:sales@castings-services.co.uk)

[www.castings-services.co.uk](http://www.castings-services.co.uk)

