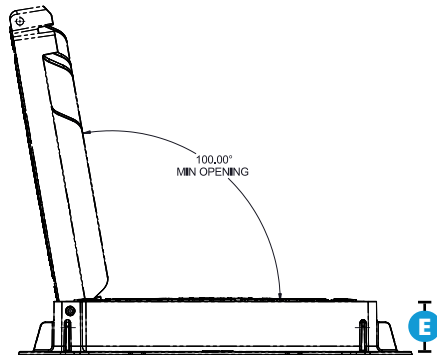
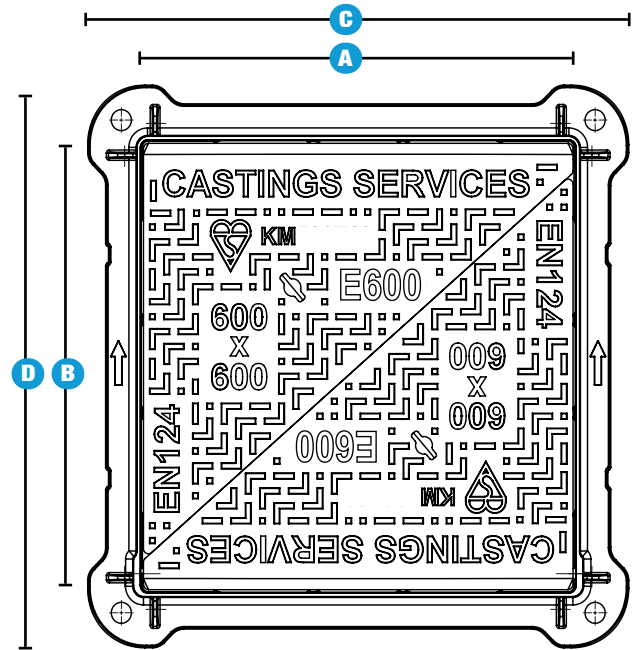
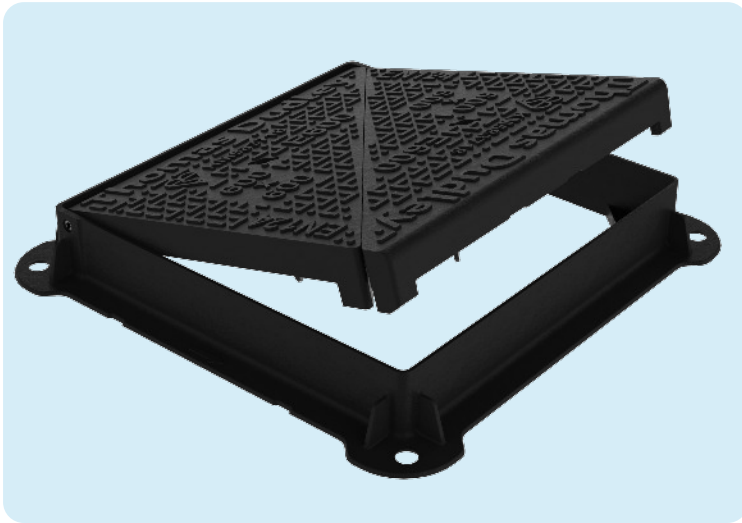


E600 DUCTILE IRON HINGED COVER AND FRAME



Clear Opening (A x B)	Over Fame (C x D)	Depth (E)	Product Code
600 x 600	750 x 750	150	MDE6060DT15/T
675 x 675	825 x 825	150	MDE6767DT15/T
1220 x 675	1370 x 825	150	MDE122067DT15/T
1000 x 1000	1150 x 1150	150	MDE150150DT15/T
1200 x 900	1350 x 1050	150	MDE120090DT15/T
1200 x 1200	1350 x 1350	150	MDE120120DT15/T
1500 x 750	1650 x 900	150	MDE150075DT15/T
1500 x 900	1650 x 1050	150	MDE150090DT15/T

Key Features:

- Hinged for one man operation.
- Non-rock, double triangular lids.
- HA104/09 and BSEN124-2:2015 compliant.
- Suitable for extremely high intensity traffic areas.
- Designed to last, not just pass the EN124 test.
- Quality assured UK engineering.



BSI
Certified



EN124-2
Compliant



HA104/09
Compliant

E600
Group 5

Sales Office **0161 745 9095**
 Telecom Products **0161 907 1242**
 Pipelines **0161 907 1241**
 Email sales@castings-services.co.uk
www.castings-services.co.uk

