



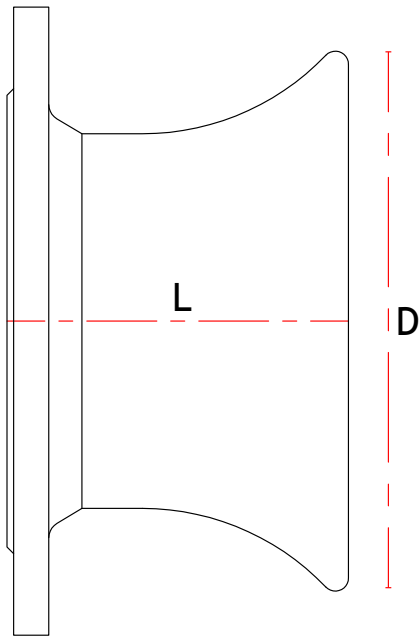
FLANGED BELLMOUTH

F13.1

CLASS K12

STANDARD

BS EN 545/598 ISO 2531



Diameter (mm)	Dimension 'L' (mm)	Diameter 'D' (mm)	Weight (Kg)	CSG Reference
80	135	150	5.3	F080BEL
100	140	175	6.5	F100BEL
150	150	230	10.7	F150BEL
200	170	290	14.8	F200BEL
250	185	345	21	F250BEL
300	205	405	30	F300BEL
350	220	460	38	F350BEL
400	240	520	49.5	F400BEL
450	255	575	62	F450BEL
500	275	635	80	F500BEL
600	310	750	120	F600BEL
700	345	865	146	F700BEL
800	380	980	197	F800BEL
900	415	1095	250	F900BEL
1000	450	1210	331	FZ10BEL

OPTIONS

- EN598
- EN545

Please remember to order gaskets

Technical drawings for illustrative purposes only. Actual product may be subject to minor design changes without notice.



Head Office

Langley Road South,
Salford,
Manchester M6 6TZ

T: +44 (0) 161 745 9095

F: +44 (0) 161 745 8996