



LEVEL INVERT 'T'

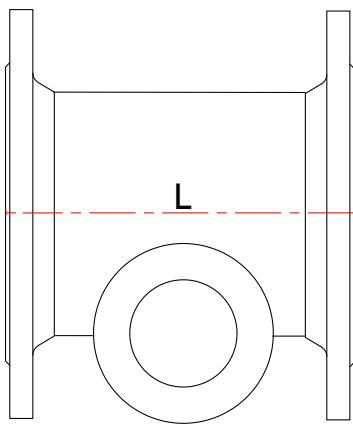
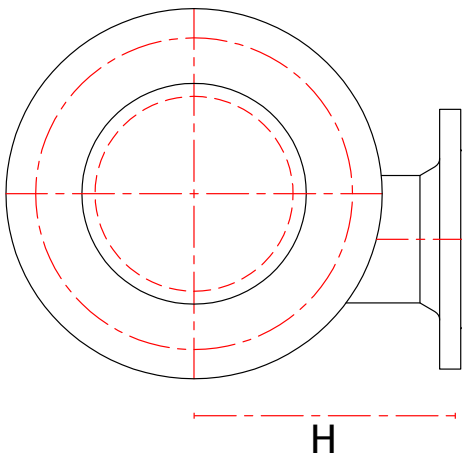
F19.1

FLANGED

CLASS K12

STANDARD

BS EN 545/598 ISO 2531



Diameter	Branch Diameter	Dimension 'L'	Dimension 'H'	Weight	CSG Reference
(mm)	(mm)	(mm)	(mm)	(Kg)	
150	80	440	220	30	F150TI080
200	80	520	250	43	F200TI080
200	100	520	250	44	F200TI100
250	80	700	275	66	F250TI080
250	100	700	275	69	F250TI080
300	100	800	305	96	F300TI100
300	150	800	305	99	F300TI150
350	150	850	340	128	F350TI150
400	100	900	365	156	F400TI100
400	150	900	365	162	F400TI150
450	100	950	380	189	F450TI100
450	150	950	380	197	F450TI150
500	150	1000	400	248	F500TI150
600	150	1100	450	360	F600TI150
600	200	1100	450	370	F600TI200
700	200	650	500	268	F700TI200
800	200	690	540	388	F800TI200
900	200	730	580	483	F900TI200
1000	200	770	630	627	FZ10TI200
1200	200	850	700	945	FZ12TI200

OPTIONS

- EN598
- EN545

Please remember to order gaskets

Technical drawings for illustrative purposes only. Actual product may be subject to minor design changes without notice.



Head Office

Langley Road South,
Salford,
Manchester M6 6TZ

T: +44 (0) 161 745 9095

F: +44 (0) 161 745 8996