



FLANGE DIMENSIONS

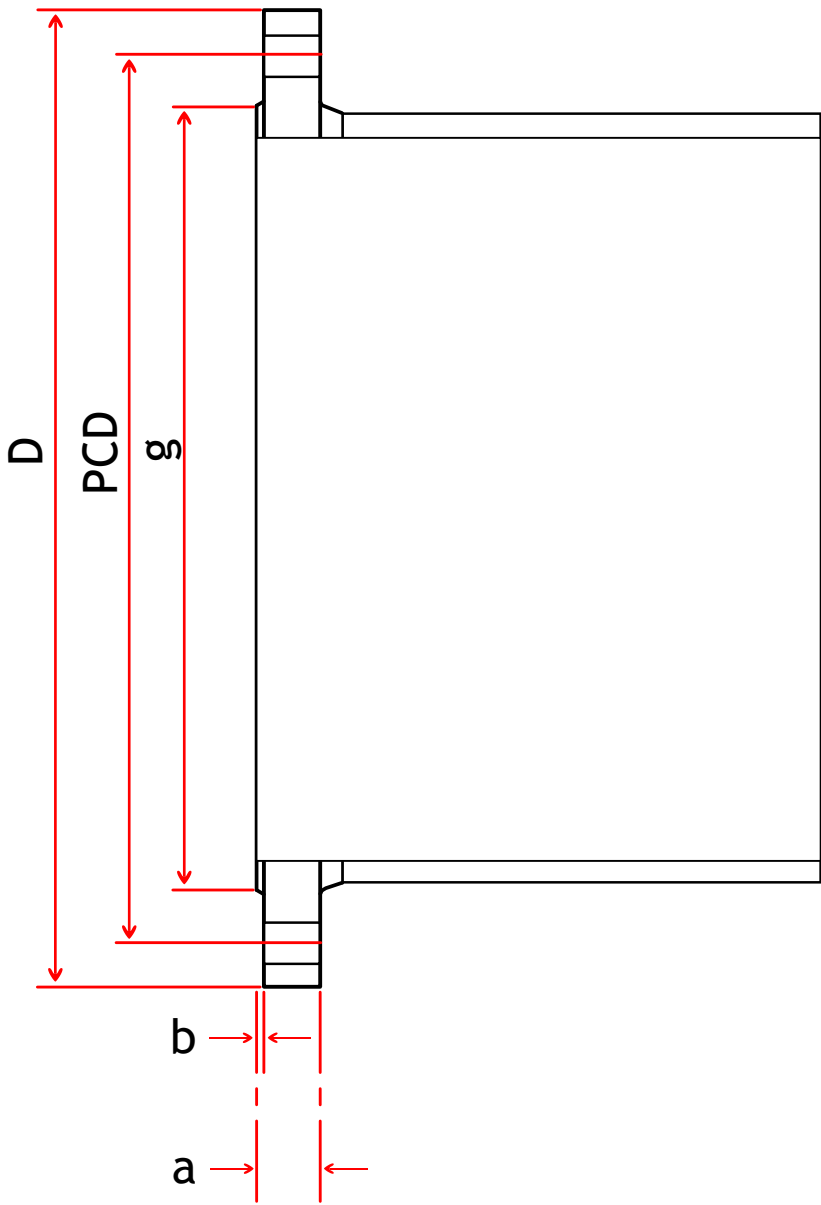
F22.1

TABLES FOR PN10, PN16 & PN25 FLANGES

CLASS K12

STANDARD

BS EN 545/598 ISO 2531



Head Office
Langley Road South,
Salford,
Manchester M6 6TZ
T: +44 (0) 161 745 9095
F: +44 (0) 161 745 8996



FLANGE DIMENSIONS

F22.1

PN10

CLASS K12

STANDARD

BS EN 545/598 ISO 2531

Size	"D"	"g"	"a"	"b"	PCD	No. of Holes	Hole Dia	Bolt Set	Spanner across flats
DN	(mm)	(mm)	(mm)	(mm)	(mm)		(mm)		(mm)
50	165	98	19	3	125	4	19	4 x M16x65	24
80	200	132	19	3	160	8	19	8 x M16x65	24
100	220	156	19	3	180	8	19	8 x M16x65	24
150	285	211	19	3	240	8	23	8 x M20x70	30
200	340	266	20	3	295	8	23	8 x M20x70	30
250	400	319	22	3	350	12	23	12 x M20x80	30
300	455	370	24.5	4	400	12	23	12 x M20x80	30
350	505	429	24.5	4	460	16	23	16 x M20x80	30
400	565	480	24.5	4	515	16	28	16 x M24x90	36
450	615	530	25.5	4	565	20	28	20 x M24x90	36
500	670	582	26.5	4	620	20	28	20 x M24x90	36
600	780	682	30	5	725	20	31	20 x M27x100	41
700	895	794	32.5	5	840	24	31	24 x M27x110	41
800	1015	901	35	5	950	24	34	24 x M30x110	46
900	1115	1001	37.5	5	1050	28	34	28 x M30x120	46
1000	1230	1112	40	5	1160	28	37	28 x M33x130	50
1100	1340	1218	42.5	5	1270	32	37	32 x M33x130	50
1200	1455	1328	45	5	1380	32	40	32 x M36x140	55
1400	1675	1530	46	5	1590	36	43	36 x M39x150	60
1600	1915	1750	49	5	1820	40	49	40 x M45x160	70



FLANGE DIMENSIONS

F22.2

PN16

CLASS K12

STANDARD

BS EN 545/598 ISO 2531

Size	"D"	"g"	"a"	"b"	PCD	No. of Holes	Hole Dia	Bolt Set	Spanner across flats
DN	(mm)	(mm)	(mm)	(mm)	(mm)		(mm)		(mm)
50	165	98	19	3	125	4	19	4 x M16x65	24
80	200	132	19	3	160	8	19	8 x M16x65	24
100	220	156	19	3	180	8	19	8 x M16x65	24
150	285	211	19	3	240	8	23	8 x M20x70	30
200	340	266	20	3	295	12	23	12 x M20x70	30
250	400	319	22	3	350	12	28	12 x M24x90	36
300	455	370	24.5	4	410	12	28	12 x M24x90	36
350	520	429	26.5	4	470	16	28	16 x M24x90	36
400	580	480	28	4	525	16	31	16 x M27x100	41
450	640	548	30	4	585	20	31	20 x M27x100	41
500	715	609	31.5	4	650	20	34	20 x M30x110	46
600	840	720	36	5	770	20	37	20 x M33x120	50
700	910	794	39.5	5	840	24	37	24 x M33x130	50
800	1025	901	43	5	950	24	40	24 x M36x140	55
900	1125	1001	46.5	5	1050	28	40	28 x M36x140	55
1000	1255	1112	50	5	1170	28	43	28 x M39x160	60
1100	1355	1218	53.5	5	1270	32	43	32 x M39x160	60
1200	1485	1328	57	5	1390	32	49	32 x M45x180	70
1400	1685	1530	60	5	1590	36	49	36 x M45x180	70
1600	1930	1750	65	5	1820	40	56	40 x M52x200	80



Head Office

Langley Road South,
Salford,
Manchester M6 6TZ

T: +44 (0) 161 745 9095

F: +44 (0) 161 745 8996



FLANGE DIMENSIONS

F22.1

PN25

CLASS K12

STANDARD

BS EN 545/598 ISO 2531

Size	"D"	"g"	"a"	"b"	PCD	No. of Holes	Hole Dia	Bolt Set	Spanner across flats
DN	(mm)	(mm)	(mm)	(mm)	(mm)		(mm)		(mm)
50	165	98	19	3	125	4	19	4 x M16x65	24
80	200	132	19	3	160	8	19	8 x M16x65	24
100	235	156	19	3	190	8	23	8 x M20x70	30
150	300	211	20	3	250	8	28	8 x M24x90	36
200	360	274	22	3	310	12	28	12 x M24x90	36
250	425	330	24.5	3	370	12	31	12 x M27x100	41
300	485	389	27.5	4	430	16	31	16 x M27x100	41
350	555	448	30	4	490	16	34	16 x M30x110	46
400	620	503	32	4	550	16	37	16 x M33x120	50
450	670	548	34.5	4	600	20	37	20 x M33x120	50
500	730	609	36.5	4	660	20	37	20 x M33x120	50
600	845	720	42	5	770	20	40	20 x M36x140	55
700	960	820	46.5	5	875	24	43	24 x M39x150	60
800	1085	928	51	5	990	24	49	24 x M45x160	70
900	1185	1028	55.5	5	1090	28	49	28 x M45x160	70
1000	1320	1140	60	5	1210	28	56	28 x M52x200	80
1100	1420	1240	64.5	5	1310	32	56	32 x M52x200	80
1200	1530	1350	69	5	1420	32	56	32 x M52x200	80
1400	1755	1560	74	5	1640	36	62	36 x M56x220	85
1600	1975	1780	81	5	1860	40	62	40 x M56x240	85



Head Office

Langley Road South,
Salford,
Manchester M6 6TZ

T: +44 (0) 161 745 9095

F: +44 (0) 161 745 8996