



# DOUBLE SOCKET

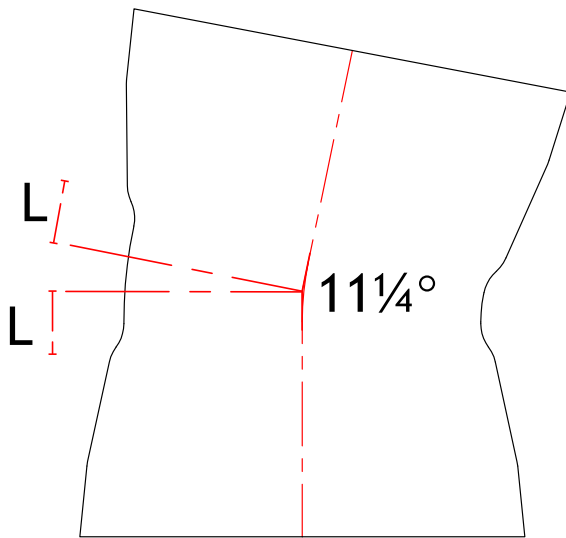
S1.1

## 11.25 DEG BEND

CLASS K12

STANDARD

BS EN 545/598 ISO 2531



Diameter (mm)	Length 'L' (mm)	Weight (Kg)	CSG Reference
80	30	6	T080B11
100	30	8	T100B11
150	35	12	T150B11
200	40	18	T200B11
250	50	25	T250B11
300	55	37	T300B11
350	60	45	T350B11
400	65	59	T400B11
450	70	72	T450B11
500	75	90	T500B11
600	85	127	T600B11
700	95	190	T700B11
800	110	250	T800B11
900	120	374	T900B11
1000	130	480	TZ10B11

### OPTIONS

- EN598
- EN545

Please remember to order gaskets

Technical drawings for illustrative purposes only. Actual product may be subject to minor design changes without notice.



Head Office  
Langley Road South,  
Salford,  
Manchester M6 6TZ

T: +44 (0) 161 745 9095  
F: +44 (0) 161 745 8996