



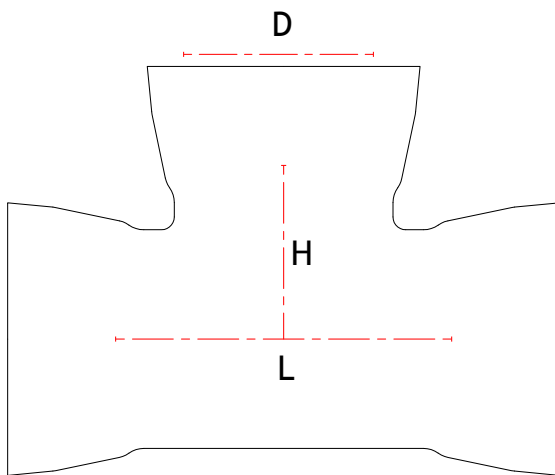
ALL SOCKET 'T'

S7.1

CLASS K12

STANDARD

BS EN 545/598 ISO 2531



Dimension (mm)	'D' (mm)	'L' (mm)	'H' (mm)	Weight (Kg)	CSG Reference
80	80	170	85	12	T080T080
100	80	170	95	15	T100T080
100	100	190	95	16	T100T100
150	80	170	120	21	T150T080
150	100	195	120	23	T150T100
150	150	255	125	28	T150T150
200	80	175	145	30	T200T080
200	100	200	145	32	T200T100
200	150	255	150	37	T200T150
200	200	315	155	43	T200T200
250	80	200	205	42	T250T080
250	100	200	210	48	T250T100
250	150	315	220	54	T250T150
250	200	315	220	55	T250T200
250	250	375	230	57	T250T250
300	80	205	230	59	T300T080
300	100	205	235	70	T300T100
300	150	320	245	72	T300T150
300	200	320	245	73	T300T200
300	250	435	250	76	T300T250
300	300	435	260	80	T300T300

OPTIONS

- EN598
- EN545

Please remember to order gaskets

Technical drawings for illustrative purposes only. Actual product may be subject to minor design changes without notice.



Head Office

Langley Road South,
Salford,
Manchester M6 6TZ

T: +44 (0) 161 745 9095
F: +44 (0) 161 745 8996